

**SPECIFICATIONS:**

**PART 1 - MATERIAL:**

**1.01 Door Guides:** Door guides are to be manufactured from 18 gauge (0.047" min.) ASTM A-653 steel, hot dipped galvanized per ASTM A-924 (G-40). Edges covered with polypropylene runners for smooth operation.

**1.02 Door Curtain:** Door curtains are to be manufactured from 26 gauge (0.018" min.) Grade 80 steel per ASTM A-653, hot dipped galvanized per ASTM A-924 (G-40).

**1.03 Door Bracket:** Door brackets are to be manufactured from 14 gauge (0.075") ASTM A-653 steel, hot dipped galvanized per ASTM A-924. Brackets to include grease packed ball bearing.

**1.04 Bottom Bar Assembly:** Door bottom bar to be roll formed from 22 gauge (0.030" min.) ASTM A1011 galvalume, hot dipped, min. yield of 50 ksi.

**PART 2 - TESTING:**

**2.01 General:** Structural Performance under Uniform Load per ASTM E 330 to safely resist a positive or negative wind load as noted below. A test load of 1.5 x design load has been used. Design Load = +13.0/-15.0 PSF

**PART 3 - EXECUTION:**

**3.01 General:** Trac-Rite rolling steel doors shall be installed following Trac-Rite assembly instructions.

# MODEL 944 ROLLING CURTAIN DOOR

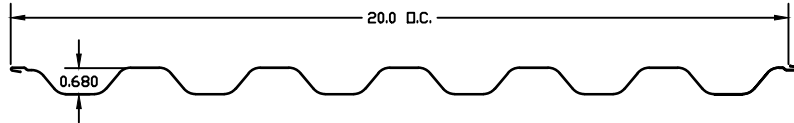
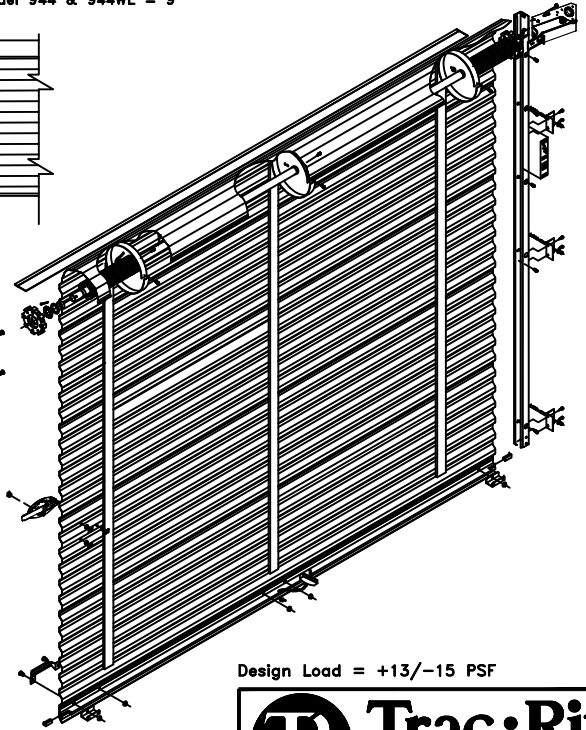
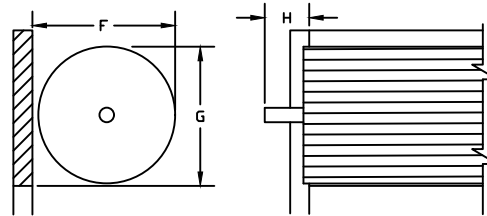
944

**OVERHEAD DOOR CLEARANCE:**

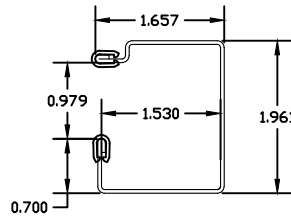
The door coils into a roll when the door is in the raised, open position. Measure to ensure there is enough clearance above the door for the coil per the chart below. Note: Insulated doors require an additional 1" of back room and head room.

F = Back Room  
G = Head Room  
H = Side Room  
H = Chain Hoist

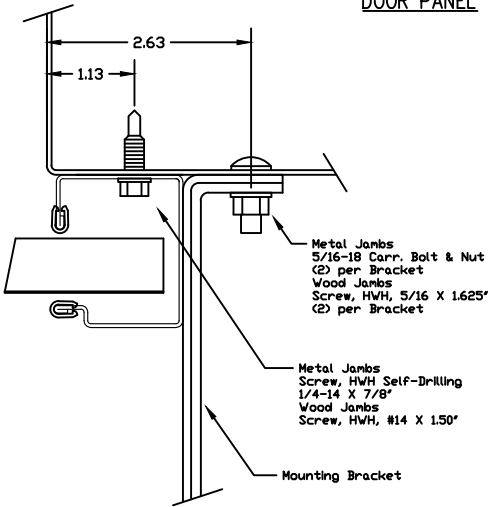
**Minimum Clearance Requirements**  
Model 944 = 18" / 944WL = 19"  
Model 944 & 944WL = 15" (16" for doors 7'1"-10'4", 18" for 10'5"-12')  
Model 944 = 4" up to 11" wide, 5" above / 944WL = 5"  
Model 944 & 944WL = 9"



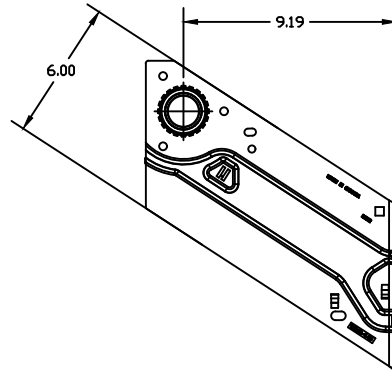
DOOR PANEL



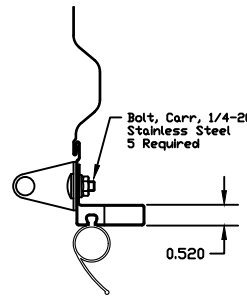
GUIDE DIMENSIONS - LH SHOWN



JAMB DETAIL



DOOR MOUNTING BRACKET



BOTTOM BAR ASSEMBLY

Latch Hole Location:  
For guides 67.5"  
and taller = 37.875"  
For guides 67.5"  
and shorter = 17.875"

Design Load = +13/-15 PSF

**Trac-Rite<sup>®</sup>**  
Door Inc.  
314 Wilburn Road, Sun Prairie, WI 53590  
608-837-7899; TOLL FREE: 800-448-8979  
FAX: 608-837-0251

DRAWN BY AARON MOREN  
CHECKED BY \_\_\_\_\_ SCALE: NONE  
DATE 5/18/2017 SHEET 1 OF 1

© 2007, TRAC-RITE DOOR, INC.

Trac-Rite Order# \_\_\_\_\_