

MODEL 944 ROLLING CURTAIN DOOR

944 DR

SPECIFICATIONS:

PART 1 - MATERIAL:

- 1.01 Door Guides: Door guides are to be manufactured from 18 gauge (0.047" min.) ASTM A-653 steel, hot dipped galvanized per ASTM A-924 (G-40). Edges covered with polypropylene runners for smooth operation.
- 1.02 Door Curtains: Door curtains are to be manufactured from 26 gauge (0.018" min.) Grade 80 steel per ASTM A-653, hot dipped galvanized per ASTM A-924 (G-40).

- 1.03 Door Bracket: Door brackets are to be manufactured from 14 gauge (0.075") ASTM A-653 steel, hot dipped galvanized per ASTM A-924. Brackets to include grease packed ball bearing.

- 1.04 Bottom Bar Assembly: Door bottom bar to be roll formed from 22 gauge (0.030" min.) ASTM A1011 galvalume, hot dipped, min. yield of 50 ksi.

PART 2 - TESTING:

- 2.01 General: Structural Performance under Uniform Load per ASTM E 330 to safely resist a positive or negative wind load as noted below. A test load of 1.5 x design load has been used. Design Load varies with door size.

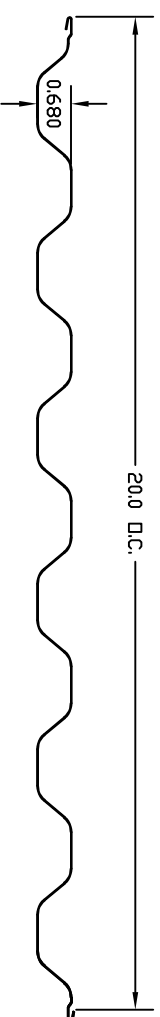
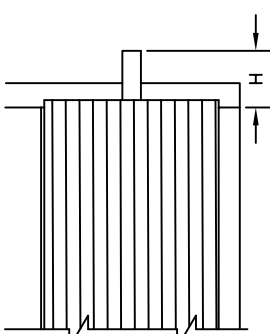
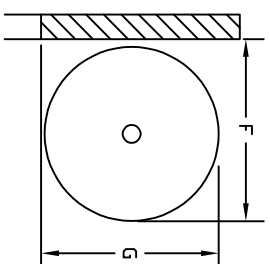
PART 3 - EXECUTION:

- 3.01 General: Trac-Rite rolling steel doors shall be installed following Trac-Rite assembly instructions.

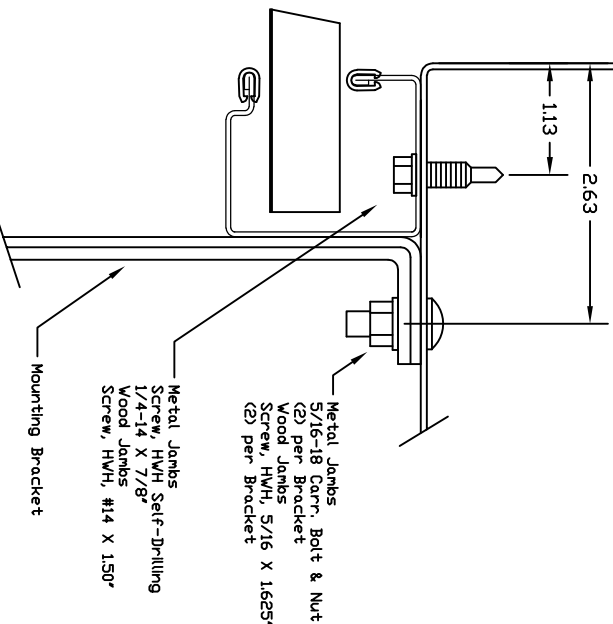
OVERHEAD DOOR CLEARANCE:

The door coils into a roll when the door is in the raised, open position. Measure to ensure there is enough clearance above the door for the coil per the chart below. Note: Insulated doors require an additional 1" of back room and head room.

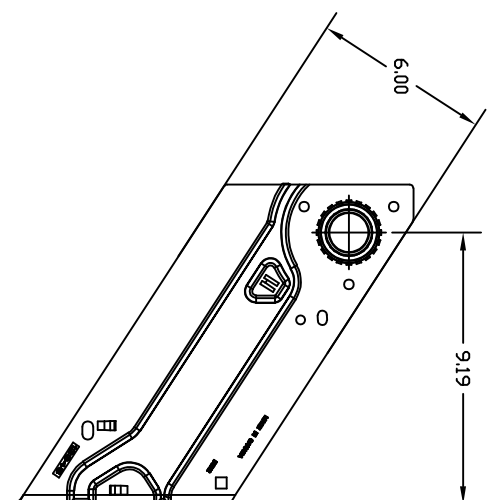
Minimum Clearance Requirements
F = Back Room
G = Head Room
H = Side Room
H = Chain Hoist
18"
15" (16" for doors 7'1"-10'4", 18" for 10'5"-12')
4"
9"



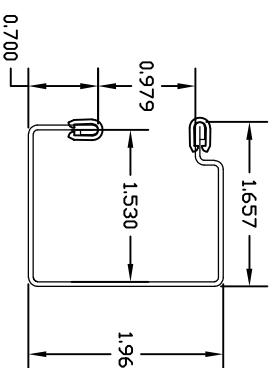
DOOR PANEL



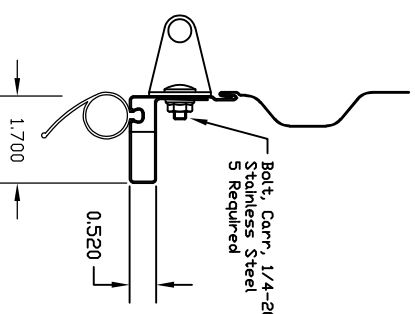
JAMB DETAIL



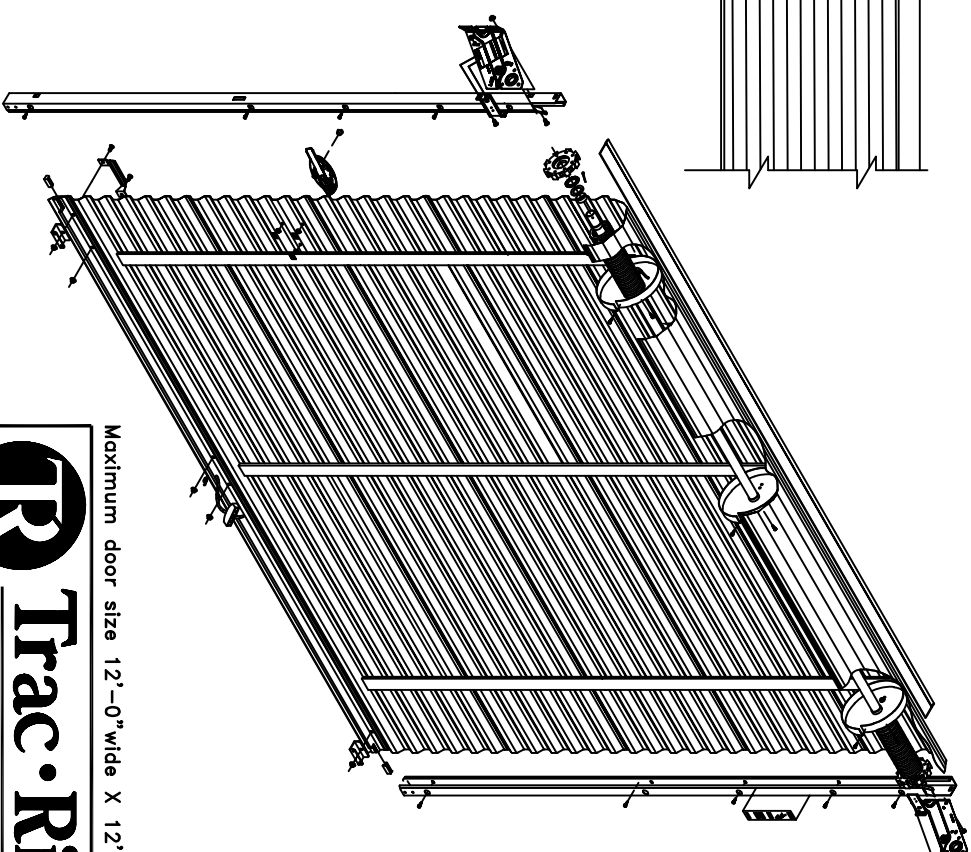
DOOR MOUNTING BRACKET



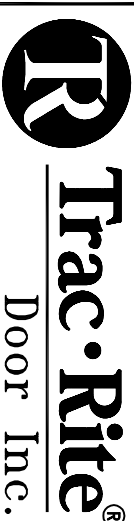
GUIDE DIMENSIONS - LH SHOWN



BOTTOM BAR ASSEMBLY



Maximum door size 12'-0" wide X 12'-0" high.



314 Wilburn Road, Sun Prairie, WI 53590
608-837-7899; TOLL FREE: 800-448-8979
FAX: 608-837-0251

DRAWN BY _____
CHECKED BY _____ SCALE: NONE
DATE _____ SHEET 1 OF 1
Trac-Rite Order # _____