

# MODEL 944WL ROLLING CURTAIN DOOR

944WL DR

## SPECIFICATIONS:

### PART 1 – MATERIAL:

- 1.01 Door Guides: Door guides are to be manufactured from 18 gauge (0.047" min.) ASTM A-653 steel, hot dipped galvanized per ASTM A-924 (G-40). Edges covered with polypropylene runners for smooth operation.
- 1.02 Door Curtain: Door curtains are to be manufactured from 26 gauge (0.018" min.) Grade 80 steel per ASTM A-653, hot dipped galvanized per ASTM A-924 (G-40).

1.03 Door Bracket: Door brackets are to be manufactured from 14 gauge (0.075") ASTM A-653 steel, hot dipped galvanized per ASTM A-924. Brackets to include grease packed ball bearing.

1.04 Bottom Bar Assembly: Door bottom bar to be roll formed from 22 gauge (0.030" min.) ASTM A1011 galvalume, hot dipped, min. yield of 50 ksi. Backup angle to be manufactured from 12 gauge ASTM A-653 steel, hot dipped galvanized per astm A-924 (G-40).

1.05 Door Curtain Windlock: Door curtain windlocks are located as required to meet specific windload & manufactured from Black Nylon 6/6. Each windlock secured to the door curtain with two 3/16" zinc plated rivets.

### PART 2 – TESTING:

2.01 General: Structural Performance under Uniform Load per ASTM E 330 to safely resist a positive or negative wind load as noted below. A test load of 1.5 x design load has been used. Design Load varies with door size.

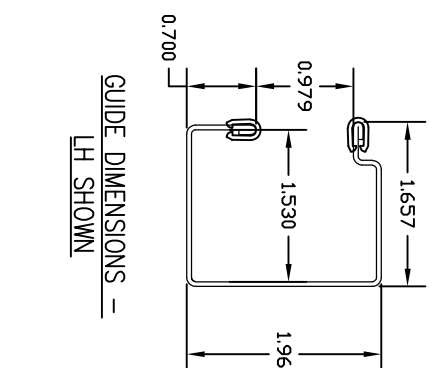
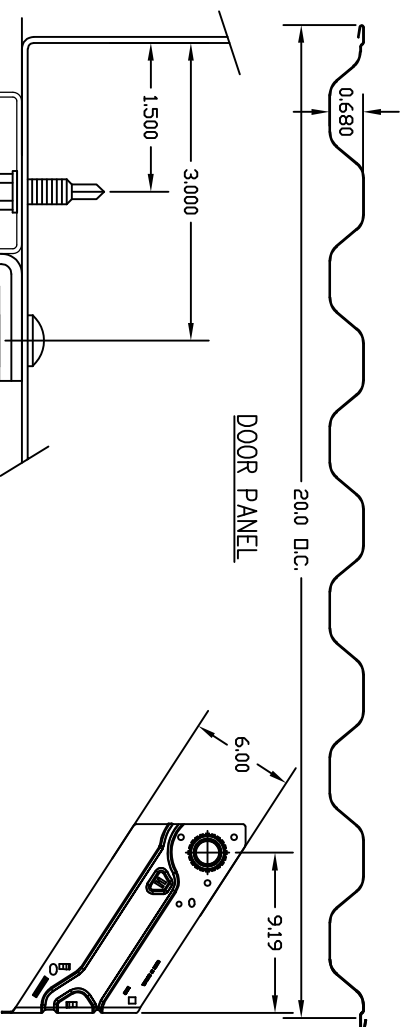
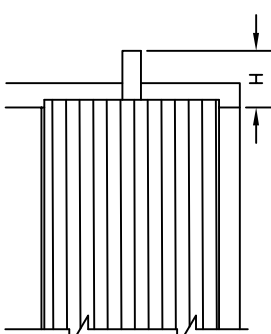
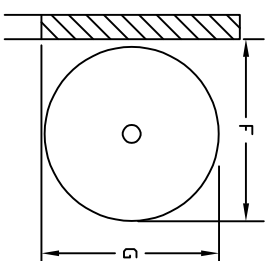
### PART 3 – EXECUTION:

3.01 General: Trac-Rite rolling steel doors shall be installed following Trac-Rite assembly instructions.

## OVERHEAD DOOR CLEARANCE:

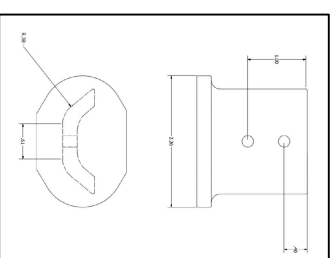
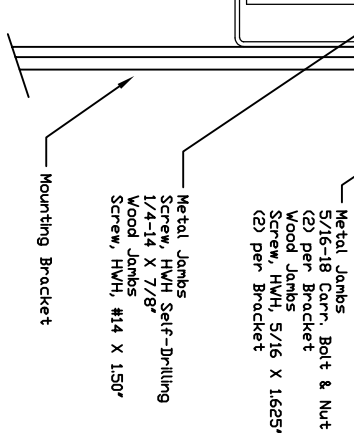
The door coils into a roll when the door is in the raised, open position. Measure to ensure there is enough clearance above the door for the coil per the chart below. Note: Insulated doors require an additional 1" of back room and head room.

Minimum Clearance Requirements	
F = Back Room	19"
G = Head Room	15" (16" for doors 7'1"-10'4", 18" for 10'5"-12')
H = Side Room	5"
H = Chain Hoist	9"

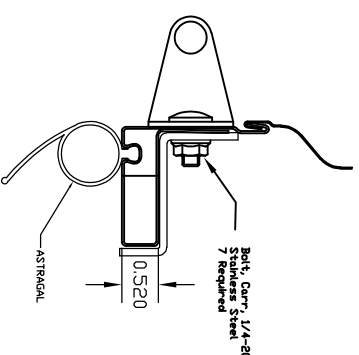


GUIDE DIMENSIONS -  
LH SHOWN

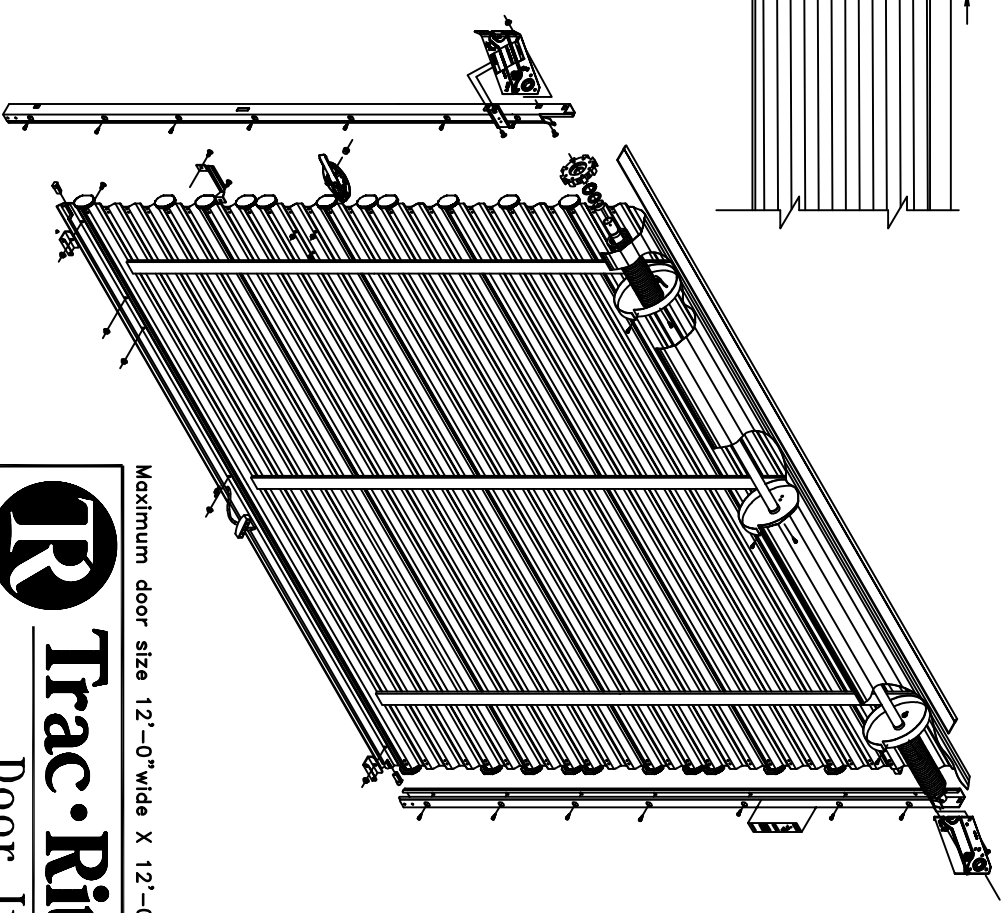
## DOOR MOUNTING BRACKET



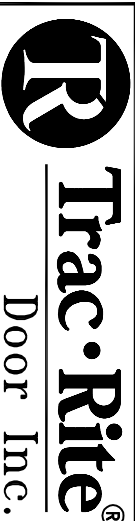
WINDLOCK



BOTTOM BAR ASSEMBLY



Maximum door size 12'-0" wide X 12'-0" high.



314 Wilburn Road, Sun Prairie, WI 53590  
 608-837-7899; TOLL FREE: 800-448-8979  
 FAX: 608-837-0251

DRAWN BY \_\_\_\_\_  
 CHECKED BY \_\_\_\_\_ SCALE: NONE  
 DATE \_\_\_\_\_ SHEET 1 OF 1  
 Trac-Rite Order # \_\_\_\_\_